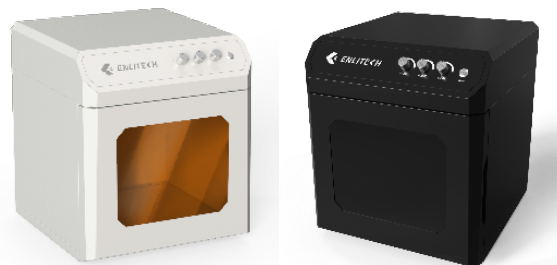


Indoor Ambient Light Simulator: ILS-30

Introduction

The ILS-30 is an indoor ambient light simulator that can illuminate three different color temperatures of light (3000K, 4000K and 5500K). The light intensity can be continuously adjusted from 250 lux to 1000 lux, covering all indoor ambient light intensity levels. The ILS-30 provides a 100mm x 100mm beam. Uniformity can be better than 95% over a 50mm x 50mm beam area. It is easy to adjust light intensity or color temperature. The ILS-30 is very compact in size and easy to install. The ILS-30 can help you quickly build an accurate indoor PV characterization facility.



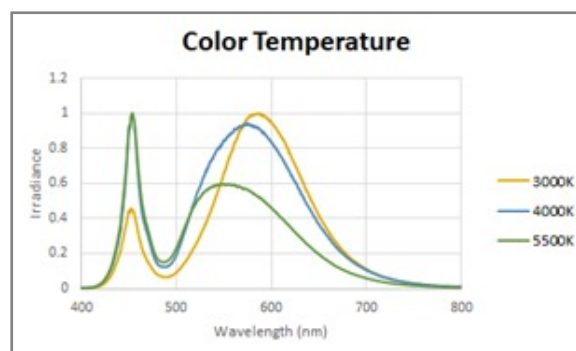
Application

- ◆ 250 lux ~ 1000 lux ambient light simulation
- ◆ Indoor PV characterization

Specification / Product Selection Guide

Item	Specification
Color temperature	3 different white light sources with different color temperatures 3000K±500K 5000K±500K 5500K±500K User defines color temperature output.
Light intensity range	250 lux ~ 1000 lux
Illumination area	100 mm x 100 mm
Uniformity area	>95% @ 50mm x 50 mm >90% @ 100 mm x 100 mm

Testing Results / Publications



ILS-30 Spectra at different color temperature

